

Technical Manual

JBL I710P



SPECIFICATIONS

ACOUSTIC & ELECTRICAL SPECIFICATIONS:

- Nominal Impedance: 8 ohm
- Power Rating: 300 W IEC
- Frequency Response: 70 Hz - 20 kHz
- Sensitivity: 93 dB (1m, 2.83V)
- Crossover Frequency: 1300 Hz

SYSTEM COMPONENTS:

- Cabinet: CI710P
- Grill: GI710P
- Low Frequency Transducer: 250 mm (10 in) Cone Transducer (2123H)
- DC Resistance: 4.2 ohm \pm 10% Aluminium Wire

SYSTEM COMPONENTS:

- High Frequency Transducer: 19 mm (0.75 in) Pure Titanium Diaphragm Compression Driver (2417H)
- DC Resistance: 3.2 ohm \pm 8% Aluminium Wire
- Crossover Network: 270637

PHYSICAL SPECIFICATIONS:

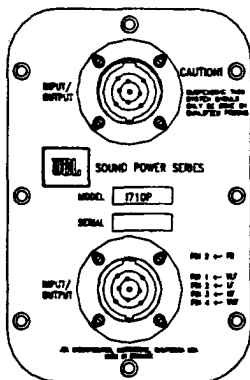
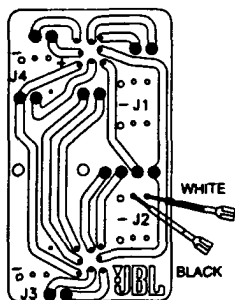
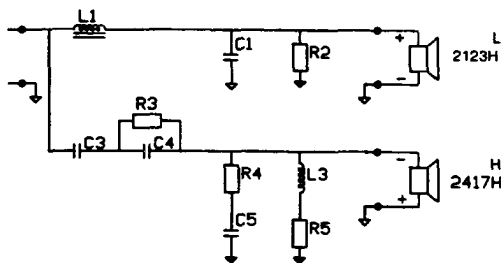
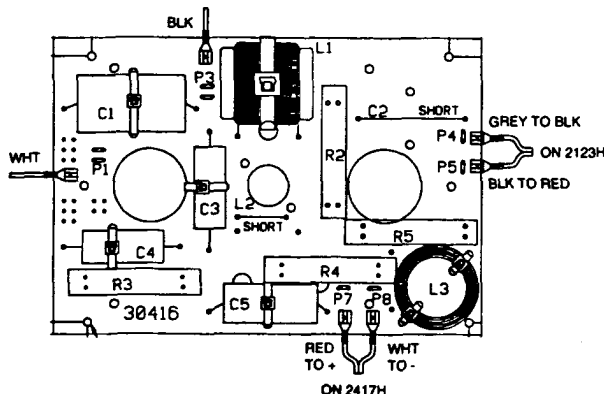
- Enclosure Dimensions: 520 x 286 x 280 mm
20.47 x 11.25 x 11 in
- Shipping Weight: 20.9 kg (46 lb)

NEUTRIK CONNECTOR

- Pins 1 \pm = Loopthrough
- Pins 2 \pm = Input
- Pins 3 \pm = Loopthrough
- Pins 4 \pm = Loopthrough

⊕ Denotes outward cone movement with positive voltage applied to pin 2 +.

WIRING DIAGRAM



PC Board	30416
C1 Capacitor 24 uF / 250 V	963616
C3 Capacitor 3.0 uF / 250 V	963601
C4 Capacitor 3.0 uF / 250 V	963601
C5 Capacitor 8.0 uF / 250 V	963605
L1 Inductor 3.8 mH / ϕ 1.2 SP-FL	965527
L3 Inductor 0.4 mH / ϕ 1.0 air	965173
R2 Resistor 30 ohm / 20 W	964509
R3 Resistor 6.8 ohm / 20 W	964503
R4 Resistor 20 ohm / 20 W	964507
R5 Resistor 6.8 ohm / 20 W	964503

PACKAGE

CARTON
INCLUDING ENDPADS
898638

JBL I710P

JBL I710P

COMPONENT EXPLODED VIEW

